

- See map -

N. W. 1/4 on page 170.

1.39

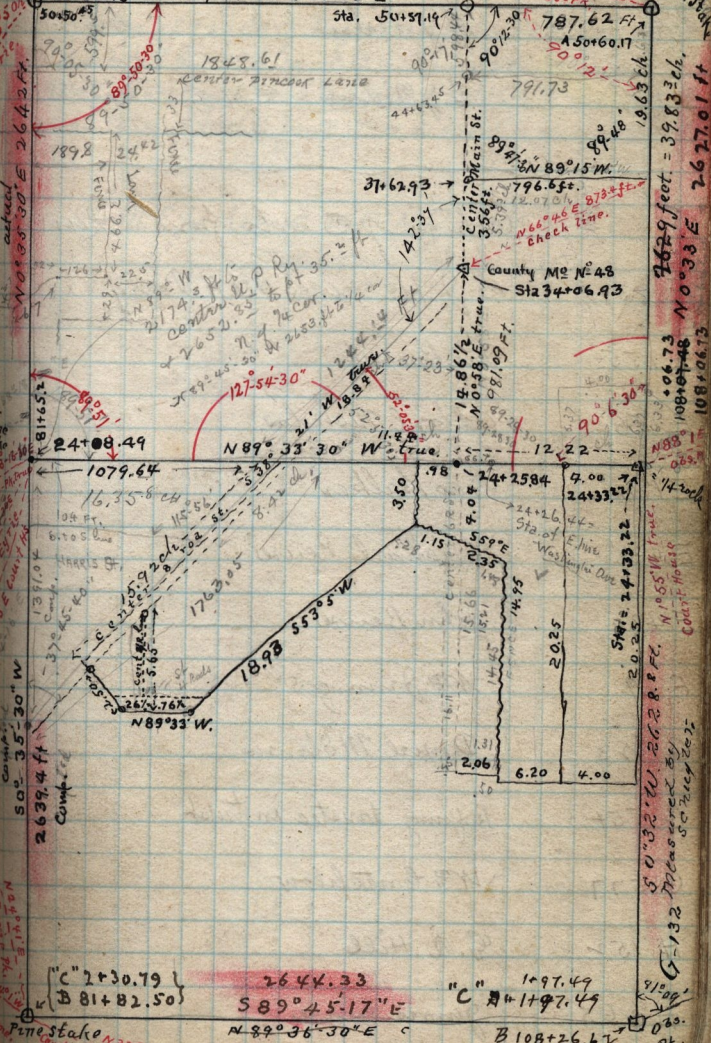
81+47.89  
50±50±E  
10.85±E  
7.11±E  
N. W. ex. W. in  
P. 100±E  
break  
L. 100±E

Cedar Stake  
50±50±45

39.94 ch. S89°15' E

385±32±E  
Obs. Pt.

Oak Stake  
107±87.62



actual  
N 0° 00' 00" E 264.2 ft.  
81+65.2  
1079.64  
24+08.49  
2639.4 ft  
50° 35' 30" W  
Comp. 2639.4 ft

7629 feet = 39.83± ch.  
N 0° 33' E 2627.01 ft  
108±67.48  
N 0° 33' E 108±67.48  
108±67.48  
N 0° 32' W 2628.8 ft.  
G-132 Measured by  
S. H. H. H. H.  
51° 09' Obs. pk.

"C" 2+30.79	2644.33	"C" 1+97.49
"B" 81+82.50	S 89° 45' 17" E	"C" 11+97.49
Pine Stake	N 89° 36' 30" E	B 108+26.62

26 1/2 links to West side st + 76 1/2 links to E. side st  
Street 4 Rods wide